

StealthBar Quick Start Guide

AirPlay and Wi-Fi setup and operation

Note:

- When using the Sound-bar for the first time, please follow the steps below for your Airplay and Wi-Fi connection. This connection process only needs to be done once. After the setup is completed successfully simply turn on the Sound-bar and it will find and connect to the Wi-Fi automatically.
- Once you set up the Sound-bar's system on your home Wi-Fi network, you can control the system from any compatible smartphone/tablets/computers on the same network.
- If you restore of the Wi-Fi settings to their default values, please re-connect the player to your home Wi-Fi network.

- Connecting the network with your IOS or Mac OS X device via WAC.

WAC (Wireless Accessory Configuration): Apple's Wireless Accessory Configuration feature is designed to allow consumers to simply set up their wireless accessories with the network credentials already stored on their iOS or OSX device.

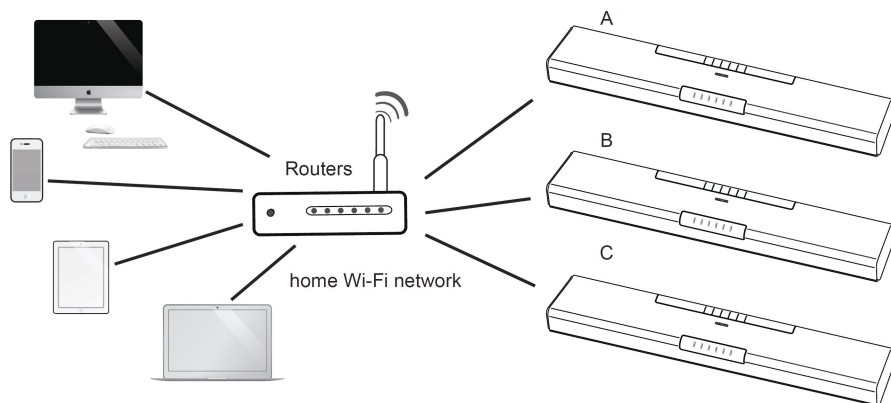
User requirements for using Wireless Accessory Configuration

Hardware

- Wireless Accessory Configuration requires a device running iOS version **7.0** or greater or OS X **10.9** with AirPort Utility **6.3.1** or greater to act as the configuring device. (If the version is too low, please Upgrade your Apple device or use **Option B** to setup network)
- A Wireless Accessory Configuration enabled accessory with Wi-Fi.

Network

- Wireless Accessory Configuration requires a wireless TCP/IP network connection between the configuring device and accessory. The Wireless Accessory Configuration enabled accessory must be able to act as both a software Access Point (AP) and as a station (STA) device.
- Target wireless networks require: an access point compatible with 802.11b/g, 802.11n, or 802.11ac.



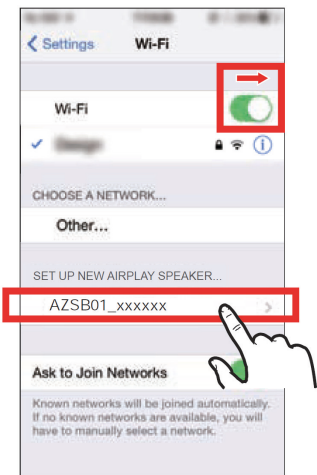
- Ensure the wireless router is available.

1 When the Sound-bar is ON, press the **SOURCE** button on the Sound-bar repeatedly or the **AIRPLAY** button on the remote control to select the **AIRPLAY** mode. The Wi-Fi indicator flashes very fast.

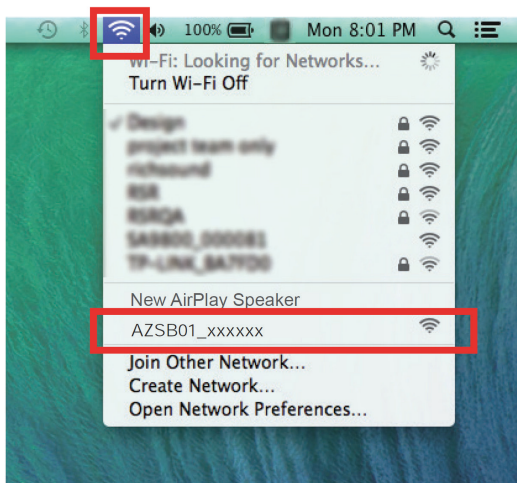
2 Sound-bar enters into the **WAC** mode. Then the Wi-Fi indicator flashes rapidly.

- Or Press and hold **AIRPLAY** button on the remote control for a few seconds to switch the Sound-bar to the **WAC** mode until the Wi-Fi indicator flashes rapidly.

3 Use your Apple devices to search for Wi-Fi network (also known as WLAN).



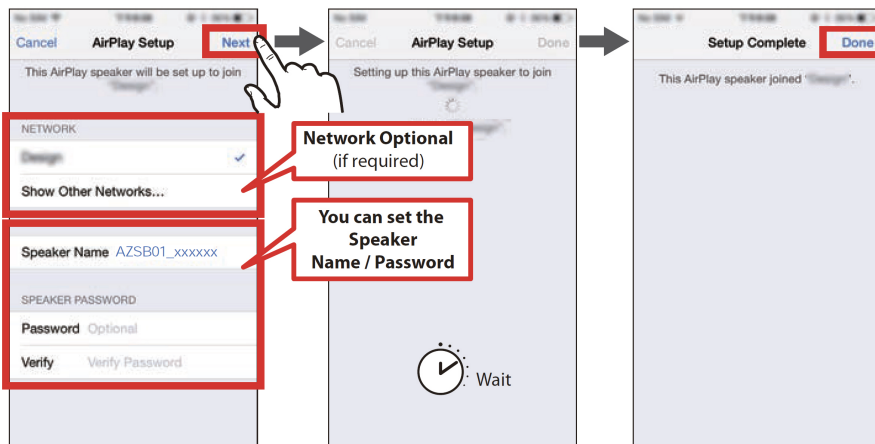
iOS 7.0



OSX 10.9

- "AZSB01_xxxxxx" (xxxxxx: MAC address) will appear on your available Wi-Fi network list of new airplay speaker

3 Select "AZSB01_xxxxxx" and follow the on-screen instructions to connect to your Home Wi-Fi network



5 Your Sound-bar is now connected to your home Wi-Fi network

- For how to stream music from your smartphone to this player and playback (See Listen to music from Wi-Fi device in the manual)

- If the connection fails, please check that your home Wi-Fi network is available and repeat steps 1 to 4 to reconnect your home Wi-Fi network.

Please refer to manual for alternate setup guide and options.