

AZATOM CX-2

2.0 Bookshelf Speakers



Optical
Audio



RCA Input



Digital Signal
Processor



Bluetooth
Audio



Equaliser



Remote
Control



USB MP3



DAC PC



AZATOM
NEXT GENERATION SOUND



Contents

Box Contents	3
LED Indicator	3
Controls & Interface	4
Connection Diagram	5
Connecting to a TV	6
Setting 'PCM' on your TV	7
Bluetooth	7
Troubleshooting	8
Customer Service	8
Specifications	9

Thank You for purchasing the Azatom CX-2 for your home.

To make the most of its features, we suggest reading the instruction manual thoroughly, which includes hints and tips to assist in resolving any problems. Please go through all the safety guidelines before using it and keep this manual for future reference.

Box Contents



Bookshelf Speakers



Remote



User Manual



Stereo RCA to 3.5mm



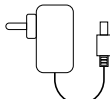
Digital Optical



USB to USB



RCA to RCA

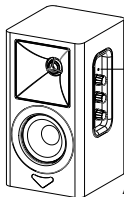


Power Adapter



Registration Card

LED Indicators



LED Indicators

Active Speaker



Standby



Bluetooth



USB

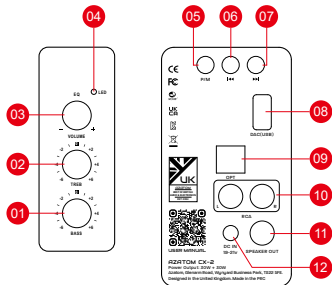


RCA

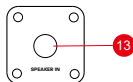


Optical

Controls & Interface

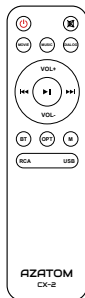


Active Speaker



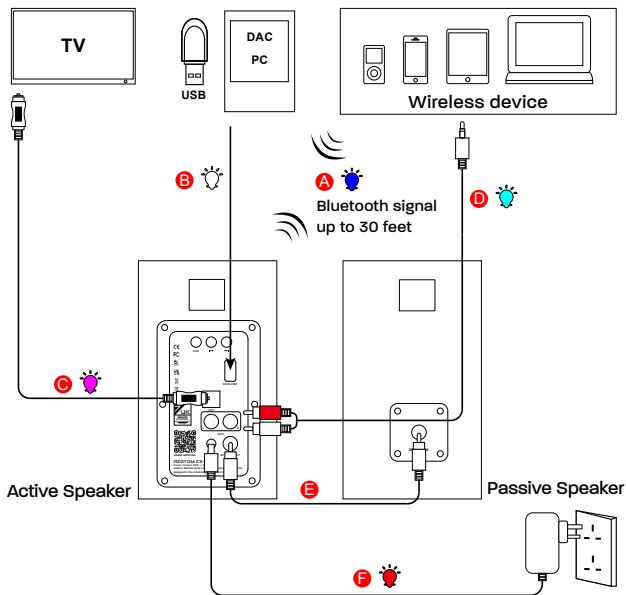
Passive Speaker

1. Bass Control
2. Treble Control
3. Volume Control / Sound Effects
Press in to navigate between audio sources: Music / Dialogue / Movie
4. LED Indicator
5. Power / Input Selection
6. Previous Track
7. Next Track
8. USB Input Port
9. Optical Input Port
10. RCA Input Port
11. Active Speaker Audio Output
12. Power Port
13. Passive Speaker Audio In



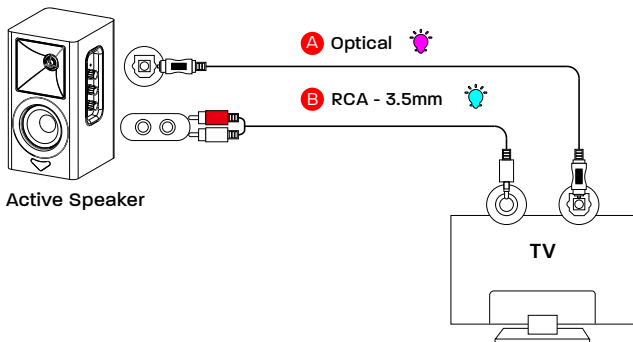
	Power Button		Mute/Unmute
	Volume Up		Volume Down
	Previous Track		Next Track
	Play/Pause		Optical Mode
	Mode Select		Bluetooth Mode
	USB /DAC Mode		Line Mode
	Movie Mode		Music Mode
	Dialogue Mode		

Connection Diagram



- A** Bluetooth
- B** USB (Supplied)
- C** Digital Optical Cable (Supplied)
- D** RCA to 3.5mm Cable (Supplied)
- E** RCA to RCA Cable (Supplied)
- F** Power Adapter (Supplied)

Connecting to a TV



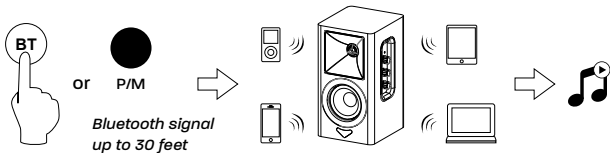
- A** Method 1. Connecting using an Optical cable. Select Optical mode and set the TV's audio output to "PCM". (More information on PCM page)
- B** Method 2. Connecting using a RCA to 3.5mm cable. Select RCA mode and set the TV's audio output to "PCM". (More information on PCM page)

Setting 'PCM' on your TV

If all cables are properly connected and the LED indicator is on, but there is no sound from the TV or speaker, please follow these steps to adjust your TV settings:

1. Press the "Menu" button on your TV's remote control.
2. Press the arrow keys to navigate to "Audio Settings."
3. Press "OK" on the remote.
4. Navigate to "Advanced Audio" and press "OK." Some TVs may not have an "Advanced Audio" option and will instead list various audio settings directly.
5. Find and select "Audio Output Mode" or "Digital Audio Output Mode," then press "OK."
6. Scroll through until "PCM" is displayed as the selected audio output.
7. Press "OK" to save the setting.

Bluetooth



1. Press "BT" button on the remote or the "P/M" button on the back panel of the active speaker. The LED indicator will start blinking blue.
2. Enable Bluetooth on your device.
3. From the list of available devices, select "CX-2" to connect. Once connected, the LED indicator will blink blue slowly.
4. You can now play music from your device through the bookshelf speaker via Bluetooth.

Troubleshooting

Problem	Solution
No Power	<ul style="list-style-type: none">◦ Ensure the power cord is properly connected.◦ Ensure that the power outlet is turned on.◦ Press the Power Button to turn the CX-2 on.
No Sound	<ul style="list-style-type: none">◦ Check if the power indicator light is ON◦ Try to turn up the volume using either the master volume control or remote control.◦ Ensure the audio cables are firmly connected and the input is set correctly on the speakers.◦ Check if there is signal output from the audio source.
Cannot connect via Bluetooth	<ul style="list-style-type: none">◦ Make sure the speaker is switched to Bluetooth input, in other audio input mode Bluetooth can not be paired or connected. Disconnect from any Bluetooth device by press and hold the volume dial in Bluetooth mode, then try again.◦ Effective Bluetooth transmission range is 10 meters, please make sure operation is within the range.◦ Try another bluetooth device for connection.

Customer Service

Need help? Contact our customer service desk.

Email (customersupport@azatom.com)

Phone ([01740 629 901](tel:01740629901))

Monday - Friday 9:00AM - 17:00PM and Saturday: 10:00AM - 14:00 PM

Specifications

Brand	Azatom
Model	CX-2

Speakers

Power Supply	100-240~ 50/60Hz
Power Consumption	23.94 W < 0.5W (Standby)
USB	5V/250mA Hi-Speed USB (2.0) FAT32 / FAT16, 32G (MAX), MP3
Dimension (WxHxD) Each	125 x 135 x 235 mm
Net Weight	2.6 Kg
Signal to Noise Ratio dB(A):	L/R: ≥85dB (A)
Frequency Response	40Hz - 20KHz
Bass Unit	3 Inch
Tweeter Unit	1 Inch

Inputs

Bluetooth Version / Profiles	V5.3 (A2DP, AVRCP)
Input Sensitivity	700±50mVFS
RCA Input Sensitivity	650±50mV
Optical Input Sensitivity	500±50mV

Amplifier (RMS Output Power)

Total Power	120W Maximum / Peak / Music Power (approx) 60 W (RMS Power @ 1% THD (W)
Speakers	30W (4Ω) + 30W (4Ω)

Remote Control

Distance / Angle	19.7 feet (6m) / 30°
Battery Type	AAA (1.5V x 2)



@AZATOM



THIS MANUAL IS AVAILABLE TO DOWNLOAD ONLINE AT WWW.AZATOM.COM

AZATOM 2020 ALLRIGHTS RESERVED. AZATOM IS PART OF AZATOM GROUP LIMITED. SEE SITE FOR SAFETYINFORMATION. AZATOM RESERVE THE RIGHT TO WITHDRAW ANY AND ALL PROMOTIONS WITHOUT NOTICE. FOR FULL WARRANTY, EXTENDED WARRANTY AND PROMOTIONAL OFFER TERMS & CONDITIONS PLEASE VISIT WWW.AZATOM.COM/TERMS-CONDITIONS.

AZATOM GROUP LIMITED, TEES VALLEY COURT, WYNYARD BUISNESS PARK, BILLINGHAM,
TS22 5FE. UNITED KINGDOM